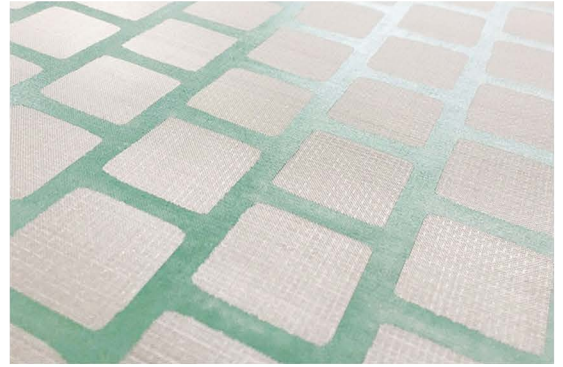
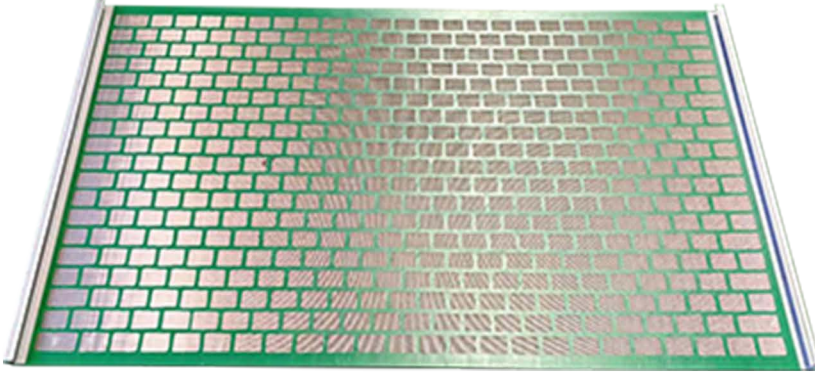


Pyramid screen
Hook Strip Flat Screen
Hook Strip Soft Screen
Composite Frame Screen
Metal Frame Screen
And More.....

ZHONGHAN MACHINERY EQUIPMENT (TIANJIN) CO., LTD.

MI SWACO BEM-3 Series PWP

Replacement Shaker Screen



Compatible Shale Shaker

MI SWACO BEM-3 Shale Shaker

Technological Parameter of MI SWACO BEM-3 PWP

Material of screen: Stainless Steel 304, SS316, SS316L

Construction Type: PWP(Perforated Wear Plate)

Perforated Mesh Shape: Rectangle

Layer of Screen:2-3 layers

Standard: API RP 13C

API RP 13C Designation: API20-API325

Series: DX, DF, HP

Warranty Period:1 year

Working Life:400-450 hours

Selection Of The Sizing Of The Mesh

When using vibrating screens on drilling fluids, the mesh sizes of the screens are selected according to the supply to the cassette, the density of the solution, the size of the removed cuttings particles, and the relative viscosity. The choice is based on the specific drilling conditions, therefore, on the rig, it is necessary to adjust the mesh size based on visual observations of the vibrating screens in order to maximize the life of the cassettes.

Structure of MI SWACO BEM-3 PWP Replacement Shaker Screen

Screen cloth, screen plate, screen frame. The screen cloth is composed of 2 or 3 layers of steel meshes with different meshes, The screen plate is a thin steel plate, and the plate is opened with multiple through holes for Bonding and supporting the screen cloth; the screen frame is welded by square or rectangular hollow steel, which is used for the multi-point support of the screen plate and the screen.

ASTM MESH AND API CUT POINT

ASTM Mesh and Cut Point		API Mesh and Cut Point	
D100 Cut Point, Microns	ASTM Single Mesh	D100 Cut Point	API Number
2000	ASTM 10 Mesh	>1850,0 to 2180,0	API 10 Mesh
1000	ASTM 18 Mesh	>780,0 to 925,0	API 20 Mesh
850	ASTM 20 Mesh	>462,5 to 550,0	API 35 Mesh
710	ASTM 25 Mesh	>390,0 to 462,5	API 40 Mesh
600	ASTM 30 Mesh	>275,0 to 327,5	API 50 Mesh
500	ASTM 35 Mesh	>231,0 to 275,0	API 60 Mesh
425	ASTM 40 Mesh	>196,0 to 231,0	API 70 Mesh
355	ASTM 45 Mesh	>165,5 to 196,0	API 80 Mesh
300	ASTM 50 Mesh	>137,5 to 165,0	API 100 Mesh
250	ASTM 60 Mesh	>165,0 to 137,5	API 120 Mesh
212	ASTM 70 Mesh	>98,0 to 116,5	API 140 Mesh
180	ASTM 80 Mesh	>82,5 to 98,0	API 170 Mesh
150	ASTM 100 Mesh	>69,0 to 82,5	API 200 Mesh
125	ASTM 120 Mesh	>58,0 to 69,0	API 230 Mesh
106	ASTM 140 Mesh	>49,0 to 58,0	API 270 Mesh
90	ASTM 170 Mesh	>41,5 to 49,0	API 325 Mesh
75	ASTM 200 Mesh	>35 to 41,5	API 400 Mesh
63	ASTM 230 Mesh		
53	ASTM 270 Mesh		
45	ASTM 325 Mesh		
38	ASTM 400 Mesh		

Note:

ASTM is short for The American Society for Testing and Materials, ASTM E11:01 mesh equals to ISO 33101:2000 mesh. This method determines the cut point of single layer ASTM screen mesh size. For shaker screen mesh, normally means the surface screen mesh size. Whilst the shaker screen is usually a composition of 2 or 3 layers, the cut point of the first layer mesh is not equal to the final shaker screen cut point.

API is short for American Petroleum Institute, "API Number" is determined by API RP13C or ISO13501, the cut point is related to the combined 3-layer wire mesh test result. So before order, we will need API number, or the cut point, to define a more proper shaker screen configuration.

DECLARATION

ZhongHan declares: ZhongHan company only manufacture the replacement shaker screens not original screens

■ MI-SWACO, Mongoose Pro Meerkat PT, Mamut, BEM-650, BEM-3 are all MI-SWACO company

- All listed items are right fit replacement shaker screen not originally made by SWACO.
- All concerned marks are reserved by the original manufacture and company.